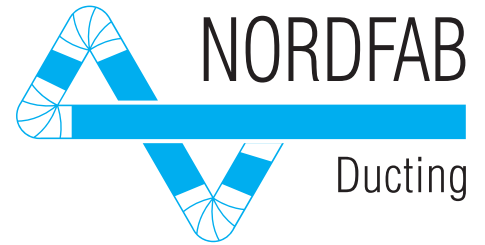


Nordfab Ducting Sealed (QFS) Parts Assembly



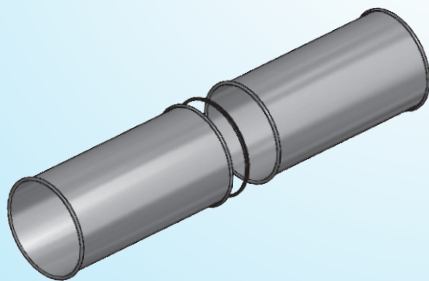
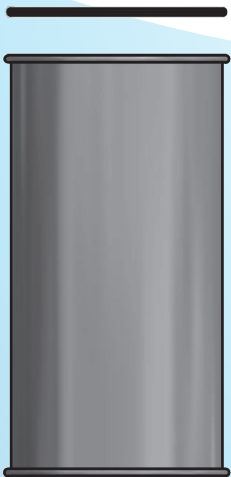
QFS Gasket

Carefully place the QFS Gasket along the rolled edge of the part, so that the top edge is evenly covered. Only one gasket is needed per joint.



Join the gasketed end of the QF duct to a non-gasketed end of the next part in the ducting run using a QF Clamp.

In a vertical installation, install the **QFS Gasket** around the QF rolled edge on either duct component. Then clamp the components together.

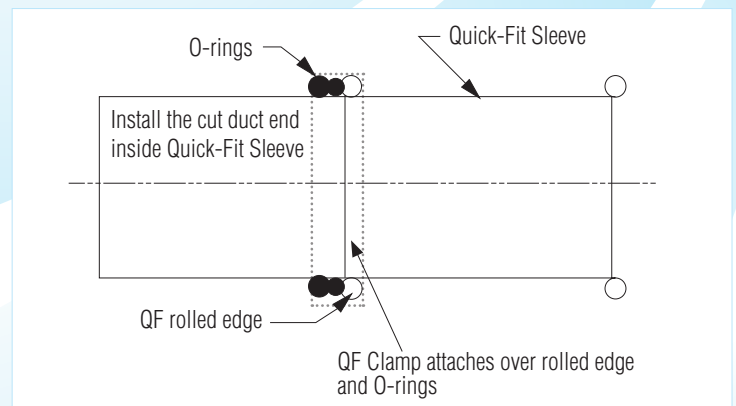


QFS O-Ring



↑
QFS O-ring
add to Quick-Fit
Sleeves

- 1) Place both O-Rings — one provided with Quick-Fit® Sleeve and the QFS O-Ring — on the duct you have cut down for use with the sleeve. The Quick-Fit Sleeve O-ring goes on first (it is thicker).
- 2) Then slide a Quick-Fit Sleeve over the cut end.
- 3) Seat the QFS O-ring evenly and firmly against the rolled metal edge of the Quick-Fit Sleeve.
- 4) Position the Sleeve O-ring firmly against the QFS O-ring.
- 5) Fasten a QF Clamp over the two O-Rings and the QF rolled edge on the Quick-Fit Sleeve.



Your Local Ducting Expert:

Jamieson Equipment Company, Inc.
Toll Free 800.875.0280
sales@jamiesonequipment.com
www.jamiesonequipment.com



The world's fastest ducting™